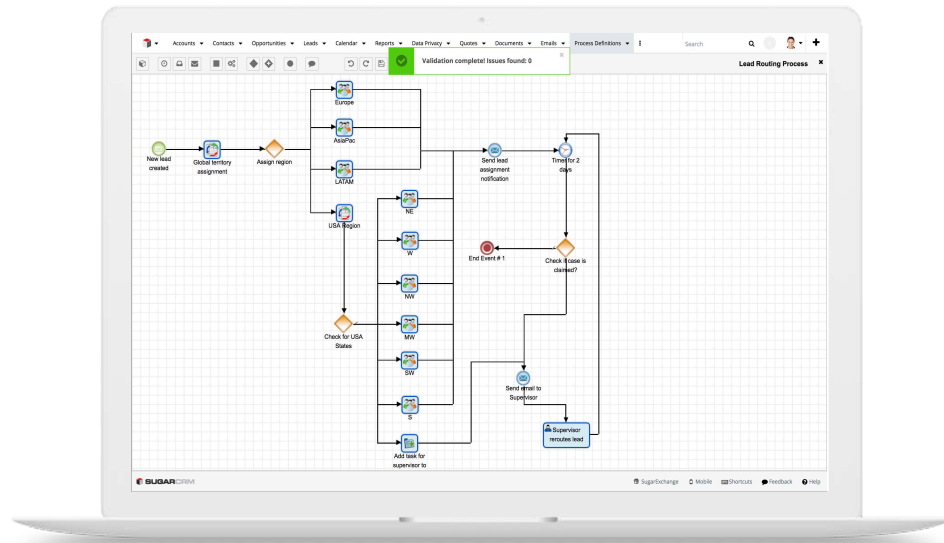


SugarBPM™

Automation Suite



PROVIDE THE RIGHT DATA, TO THE RIGHT PEOPLE, AT THE RIGHT TIME

SugarBPM™ is an advanced automation suite within Sugar Enterprise and Sugar Ultimate Editions. This new feature set allows organizations to increase efficiency and productivity across the business through automating and optimizing key business and customer-facing processes.

BENEFITS

SIMPLIFY AND AUTOMATE COMPLEX BUSINESS PROCESSES

- SugarBPM™ supports complex business rules, email templates, process automation flows and monitoring
- SugarBPM™ provides the capabilities to support enterprise-level complex business processes through industry standards-based process driven architecture
- Automate sales and customer service activities to sell more and improve customer satisfaction

CUSTOMIZE AND EXTEND BEST PRACTICES

- Build and customize specific business related flows and templates to use it across departments for best practices
- Zero coding experience needed; build and share complex flows using visual designer

CONTINUOUSLY IMPROVE EFFICIENCY

- Sugar BPM allows individual end users to receive, analyze, and react to notifications through any standard e-mail system, wireless devices, or any standard Web browser
- SugarBPM™ lets end users and admins model and maintain business processes using a visual graphical tool without coding
- It encapsulates complex and multi-step flows to automate and streamline business process