



*Welcome to the software you've always wanted....*

---

# SAGE 100

## INVENTORY INTEGRATION WITH AMAZON OPERATING MANUAL

---

<http://fayebsg.com/sage-amazon-integration/>

Faye Business Systems Group  
[www.fayebsg.com](http://www.fayebsg.com) | [info@fayebsg.com](mailto:info@fayebsg.com)  
818-280-4820

---

## **Overview**

The **Inventory Integration with Amazon** transmits warehouse inventory data from Sage 100 to Amazon.com's S3 service in an automated fashion to allow the Amazon.com website to have accurate and up to date inventory data. It can transmit all items or just items that have changed since the last transmission.

## **Key Features & Functions**

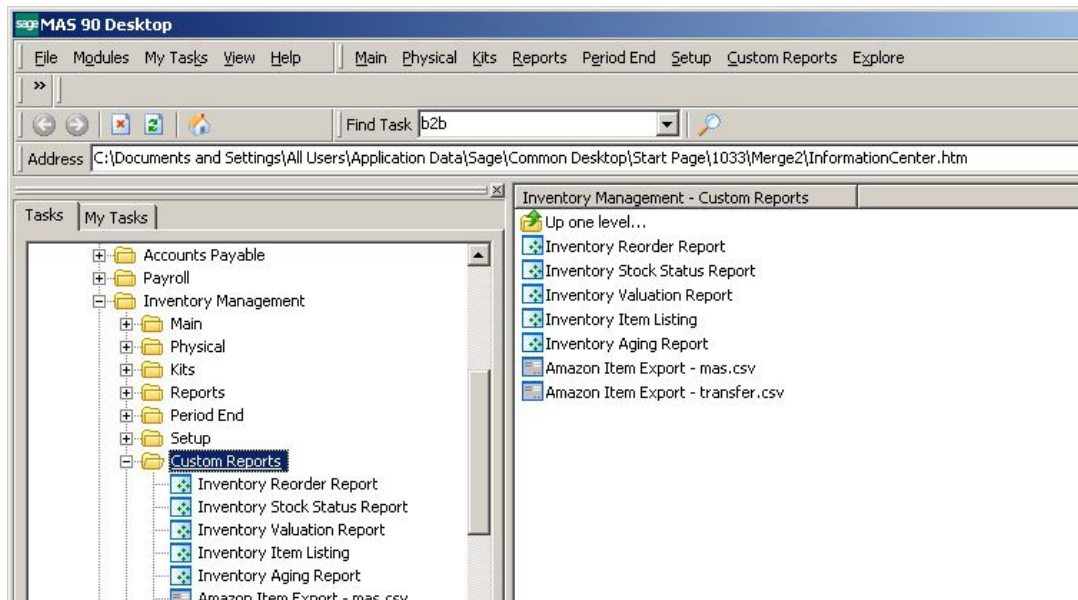
- Allows manual upload of inventory data to Amazon.com
- Allows automated upload of inventory data to Amazon.com
- Sends all items or just “changed” items
- Keeps a log of transmissions
- Keeps Amazon.com inventory records in sync with your Sage 100 inventory data
- Meets Amazon.com technical requirements

# Faye Business Systems Group

## Enhancement for Sage 100 Inventory Integration with Amazon

### Manual Operation

1. Launch Sage 100.
2. Select **Inventory Management** from the *Sage 100 Modules Menu*.
3. Select one of the following options from the *Inventory Management Custom Reports Menu*:
  - **Amazon Item Export – mas.csv**  
Will generate an export file containing all items listed in the WEB warehouse.
  - **Amazon Item Export – transfer.csv**  
Will generate an export file containing all items listed in the WEB warehouse that also have an inventory transaction record in that warehouse during the current day.



### Notes:

- No user prompting will be performed.
- Files generated by the above two options will be transmitted to Amazon immediately.
- No transmission will occur if no valid records are found.

## **Faye Business Systems Group**

### **Enhancement for Sage 100 Inventory Integration with Amazon**

#### **Batch/Automated Operation**

1. Locate and run one of the following two batch files (or alternately set a schedule to run them):
  - **Amazon send mas.bat.**  
Will generate an export file containing all items listed in the WEB warehouse.
  - **Amazon send transfer.bat**  
Will generate an export file containing all items listed in the WEB warehouse that also have an inventory transaction record in that warehouse during the current day.

#### **Notes:**

No user prompting will be performed.

Files generated by the above two options will be transmitted to Amazon immediately.

No transmission will occur if no valid records are found.

# Faye Business Systems Group

## Enhancement for Sage 100 Inventory Integration with Amazon

### Technical Notes

1. An example of the batch file code used:

*F:*

*CD \MAS90V420\MAS90\Home*

*F:\MAS90V420\MAS90\Home\pvxwin32.exe -hd ..\launcher\sota.ini ..\soa\startup.m4p -ARG  
DIRECT UIOFF USER PASSWORD SBC IM0503673\_AmazonItemExport\_UI  
IM0503673\_AmazonItemExport\_External\_MAS.INI*

It is recommended that the USER and PASSWORD reflect a low security user created specifically for this purpose. The final parameter (*IM0503673\_AmazonItemExport\_External\_MAS.INI* in this example) is the name of a text file in the MAS\_SYSTEM folder of MAS 90 that contains configuration information. The MAS Menu tasks contain a similar parameter.

2. Parameter INI files maintain information MAS needs to locate the export and program directories. The first line is the word MAS or TRANSFER to indicate which style of export to use. The second line is the destination of the generated export file. The third line is the location of the program. Having different files is necessary do to network drive mapping requirements.

*MAS*

*D:\Public\Applications\MAS90V420\MAS90\Amazon Export Files\*

*D:\Public\Applications\MAS90V420\MAS90\Amazon Integration\*

Current files of this type are:

- **IM0503673\_AmazonItemExport\_External\_MAS.INI** (for standard web exports from a batch file)
- **IM0503673\_AmazonItemExport\_External\_TRANSFER.INI** (for transfer only exports from a batch file) **IM0503673\_AmazonItemExport\_Internal\_MAS.INI** (for standard web exports from the menu) **IM0503673\_AmazonItemExport\_Internal\_TRANSFER.INI** (for transfer only exports from the menu)

3. The S3 transmission programs (and transmission log) are stored in the **..\MAS90\Amazon Integration\** folder.

A notepad editable file **FileUpload\_S3.exe.config** is present in that directory that needs to be populated with the login and transmission file locations that Amazon will require. This file explains the proper settings to use.